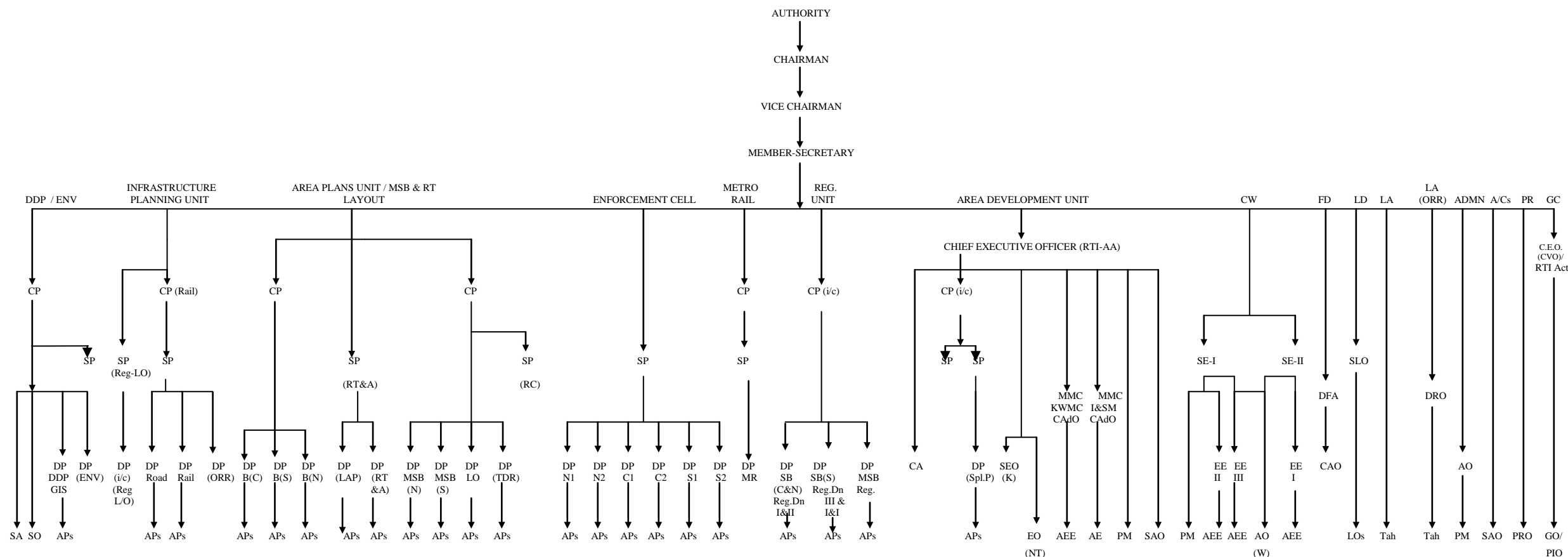


ORGANISATION CHART OF CHENNAI METROPOLITAN DEVELOPMENT AUTHORITY



ABBREVIATIONS USED IN ALPHABETICAL ORDER

1	ADMN.	Administration Division	16	CAO	Chief Accounts Officer	31	FD	Finance Division	46	MSB (N)	Multi-Storeyed Buildings (North)	61	SA	System Analyst
2	AO	Administrative Officer	17	CD	Computer Division	32	GC	Grievance Cell	47	MSB Reg.	Multi-Storeyed Building Regularisation Dn.	62	SAO	Senior Accounts Officer
3	AE	Assistant Engineer	18	CEO	Chief Executive Officer	33	GIS	Geographical Information System	48	MR	Metro Rail	63	SB(C&N) Reg.	Special Buildings (Central & North)
4	AEE	Assistant Executive Engineer	19	CP	Chief Planner	34	GO	Grievance Officer	49	N2	North II	64	SB(S)	Special Buildings (South)
5	APs.	Assistant Planners	20	CVO	Chief Vigilance Officer	35	I&I Reg.	Industrial & Institutions Regularisation Dn	50	NT	New Town	65	SE	Superintending Engineer
6	APU	Area Plans Unit	21	CW	Construction Wing	36	I&SM	Iron & Steel Market	51	ORR	Outer Ring Road	66	SEO	Senior Estate Officer
7	AA	Appellate Authority (RTI Act)	22	DDP	Detailed Development Plan	37	K	Koyambedu	52	PIO	Public Information Officer	67	SLO	Senior Law Officer
8	AO (W)	Accounts Officer (Works)	23	DP	Deputy Planner	38	KWMC	Koyambedu Wholesale Market Complex	53	PM	Personnel Manager	68	SO	Statistical Officer
9	B(C)	B Channel (Central)	24	DRO	District Revenue Officer	39	LA	Land Acquisition	54	PR	Public Relations Division	69	SP	Senior Planner
10	B(N)	B Channel (North)	25	DDP	Detailed Development Plan	40	LD	Legal Division	55	PRO	Public Relations Officer	70	SplP	Special Projects
11	B(S)	B Channel (South)	26	DFA	Deputy Financial Analyst	41	LO	Deputy Layout	56	Reg. L/O	Reg. Lay Out	71	Tah	Tahsildar
12	C1	Central I	27	EC	Enforcement Cell	42	LOs	Law Officers	57	RT&A	Review Team & Appeal	72	TDR	Transfer of Development Rights
13	C2	Central II	28	EE	Executive Engineer	43	LAP	Local Body Assistance Programme	58	RC	Reclassification			
14	CA	Chartered Accountant	29	ENV	Environment Division	44	MMC	Market Management Committee	59	S1	South I			
15	CAdO	Chief Administrative Officer	30	EO	Estate Officer	45	MSB (S)	Multi-Storeyed Buildings (South)	60	S2	South II			